

## AuO models – User tips



The AuO models (Autonomous Operation) are equipped as standard with an internal battery and an external battery charger. The AuO models are intended to operate connected only to their own 12Vdc battery. No connection to external 12V power source is available.

Normally batteries are VRLA gel type, deep cycle, while the battery chargers are IU00 type, with floating stage. The input voltage of the battery charger is 100-240Vac 50-60 Hz.

All AuO models are equipped with a safety switch (1) that disconnect the battery from the electrical circuit. The AuO models leave the factory with the safety switch on "Off".



### Before first use:

- ❑ Turn the safety switch to "On"
- ❑ Connect the battery charger to the AC mains and turn its main switch to "On" (2)
- ❑ Fully charge the battery, until reaching charging step 5 (led on battery charger (3) green, flashing slowly)
- ❑ Turn the battery charger switch to "Off"
- ❑ Disconnect the battery charger from the AC mains
- ❑ The unit is now ready for normal service




### Normal autonomous use:

- ❑ Check that safety switch is on "On"
- ❑ Press the main switch of the Coldtainer unit to "On"
- ❑ The digital level (4) will show the voltage level, not the percentage of charge
- ❑ In case the voltage of the internal battery drops under the cut-off value set in the compressor electronic, the compressor will stop. Battery charging is required

### Recharge of battery:

- ❑ Check that safety switch is on "On"
- ❑ Connect the battery charger to the AC mains and turn its main switch to "On"
- ❑ Fully charge the battery, until reaching charging step 5 (led on battery charger green, flashing slowly)

easy cooling, smart moving

-  **Note:** with the battery charger connected to the AC mains it is also possible to operate at same time the unit, to pre-cooled it or to maintain internal temperature. In such a case the time to reach the full recharge will be longer
-  **Note:** you can leave the battery charger connected to the AC mains also for long periods. Every 12 days switches back to phase 1 for 85 minutes in order to revive the battery. This prevents any fatigue symptoms such as sulphation.
-  To switch off the battery charger set its main switch to "Off"

During operation the main led of the battery charger display the operating status or alarm code:

Led color	Meaning
Orange, quickly flashing	Phase 1 - Bulk
Orange, slowly flashing	Phase 2 - U0 phase (absorption)
Orange, constantly lit	Phase 3 - U0 phase (absorption)
Green, constantly lit	Phase 4 - U0 phase (absorption)
Green, slowly flashing	Phase 5 – U phase (float)
Red, constantly lit	Short circuit or defective fuse
Red, quickly flashing	Battery or battery charger is overheating
Red, slowly flashing	Battery under voltage or overload
Red, double flash	Battery charger fan fault
Red, slow double flash	Fault at the starter battery connection

1 - safety switch



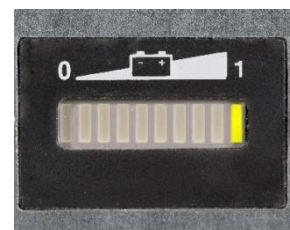
2- battery charger switch



3- battery charger led light



4 - voltage level



easy cooling, smart moving