

F0330 PRODUCT INFO

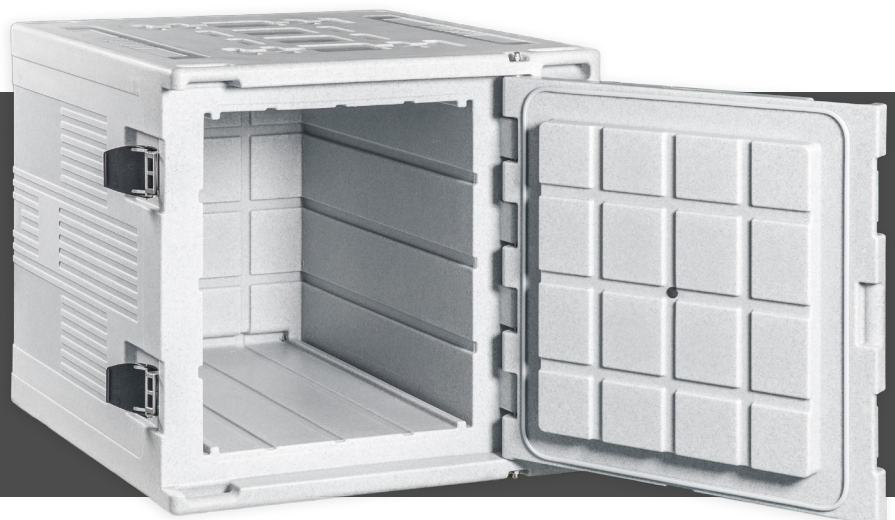


The COLDTAINER product line includes a large range of state of the art 12V active mobile refrigerated containers. The containers are produced using the rotational molding technology according to the highest standards. They come in a variety of types, internal volumes and internal temperature ranges designed to satisfy all possible demands of professional users in term of temperature controlled transport

- Internal gross capacity 330 litres
- Single piece design is sturdy, durable and lightweight, with no junctions or cold bridges. Made of food grade polyethylene (PE), UV stabilized. Ultra-thick insulation made by PU foam. Designed for an easy cleaning and disinfection
- Direct current cooling units designed for years of use on board of vehicles, providing low energy consumption and resistance to vibrations. Ambient temperature range from -20°C up to +55°C (with reduced specifications)
- Refrigeration system includes 12V compressors, large surface roll-bond evaporators, ventilated high efficiency spiral tube condensers, electronic thermostat with digital display, battery protection system
- NDH version available for the safe transport of sensitive products (i.e. pharmaceuticals, vaccines, blood). It maintains consistent temperature with a smooth air flow distribution, regardless of outside ambient temperature in alignment with GDP
- AC/DC power supplies available as accessories

Available versions:

- ☐ NDN down to +0°C
- ☐ FDN down to -21°C
- ☐ NDH from +30°C to +0°C
- ☐ XFDN down to -30°C



easy cooling, smart moving

www.coldtainer.com

F0330
PRODUCT INFO

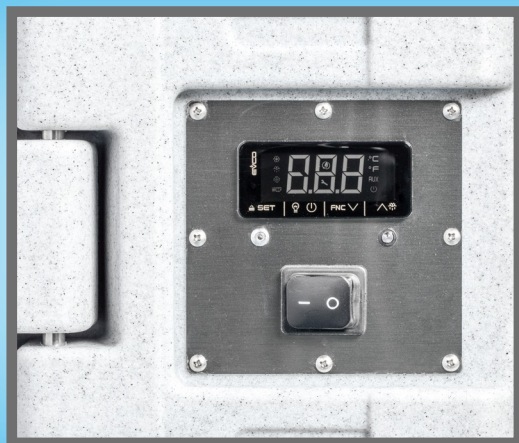
Model name	F0330/NDN	F0330/FDN
EE article nr.	816008/00	816008/01
Gross capacity (lt)	330	330
Temperature range (°C)*	down to +0°C	down to -21°C
ATP class	FRAX	FRCX
Voltage	12-24 Vdc	12-24 Vdc
Peak Amps (@12Vdc)	10A	18A
Fuse on DC cord	25A	30A
External dimensions (mm)	1000 x 1020 x 910	1000 x 1020 x 910
Weight (kg)	80	83
PU insulation (mm)	100	100
"K" insulation factor	0,27 W/m²K	0,27 W/m²K
Refrigerant gas (type)	R134a	R134a
Refrigerant gas (gr)	96	130
Cut-out / cut-in voltage	9,6 Vdc-10,9 Vdc	9,6 Vdc-10,9 Vdc
AC/DC power supply (opt)	560019/00	560020/00

F0330/NDH	F0330/XFDN
816008/06	816008/04
330	330
from +30°C t +0°C	down to -30°C
BRBX**	n.d.
12 Vdc	12 Vdc
10A	25A
30A	50A
1000 x 1020 x 910	1000 x 1020 x 910
97	90
100	100
0,27 W/m²K	0,27 W/m²K
R134a	R404A
96	250
9,6 Vdc-10,9 Vdc	11 Vdc-12,3 Vdc
560019/00	560021/00

*with ambient temperature +30°C

**available from Q3/2025

E57 10R-060148



032025 rev0 - Copyright©2025 Euroengel srl

